

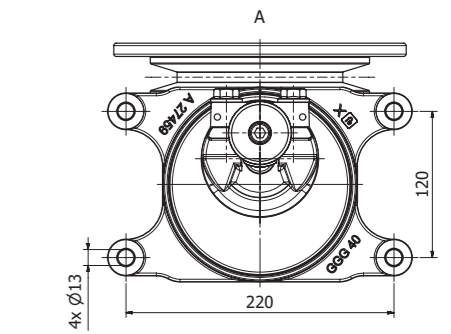
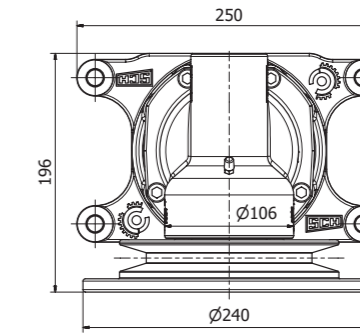
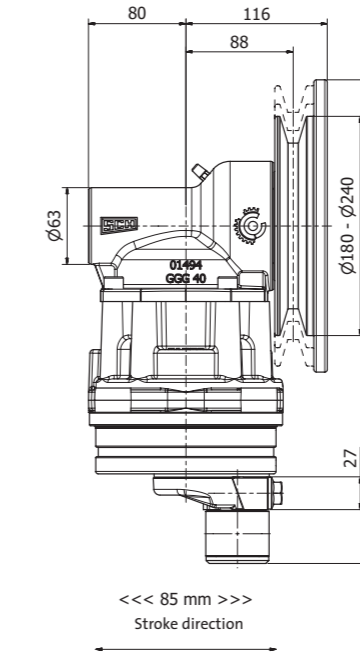
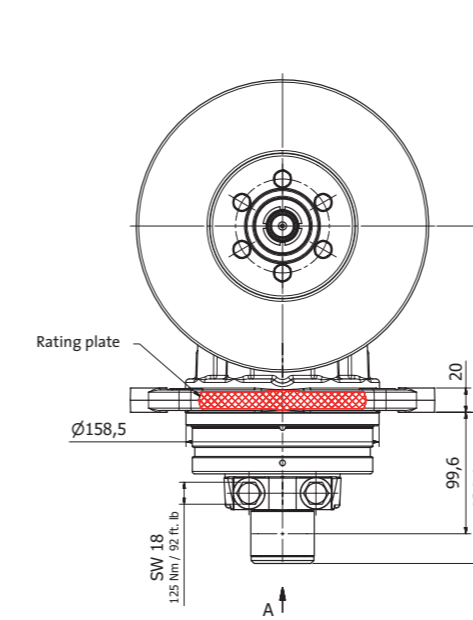
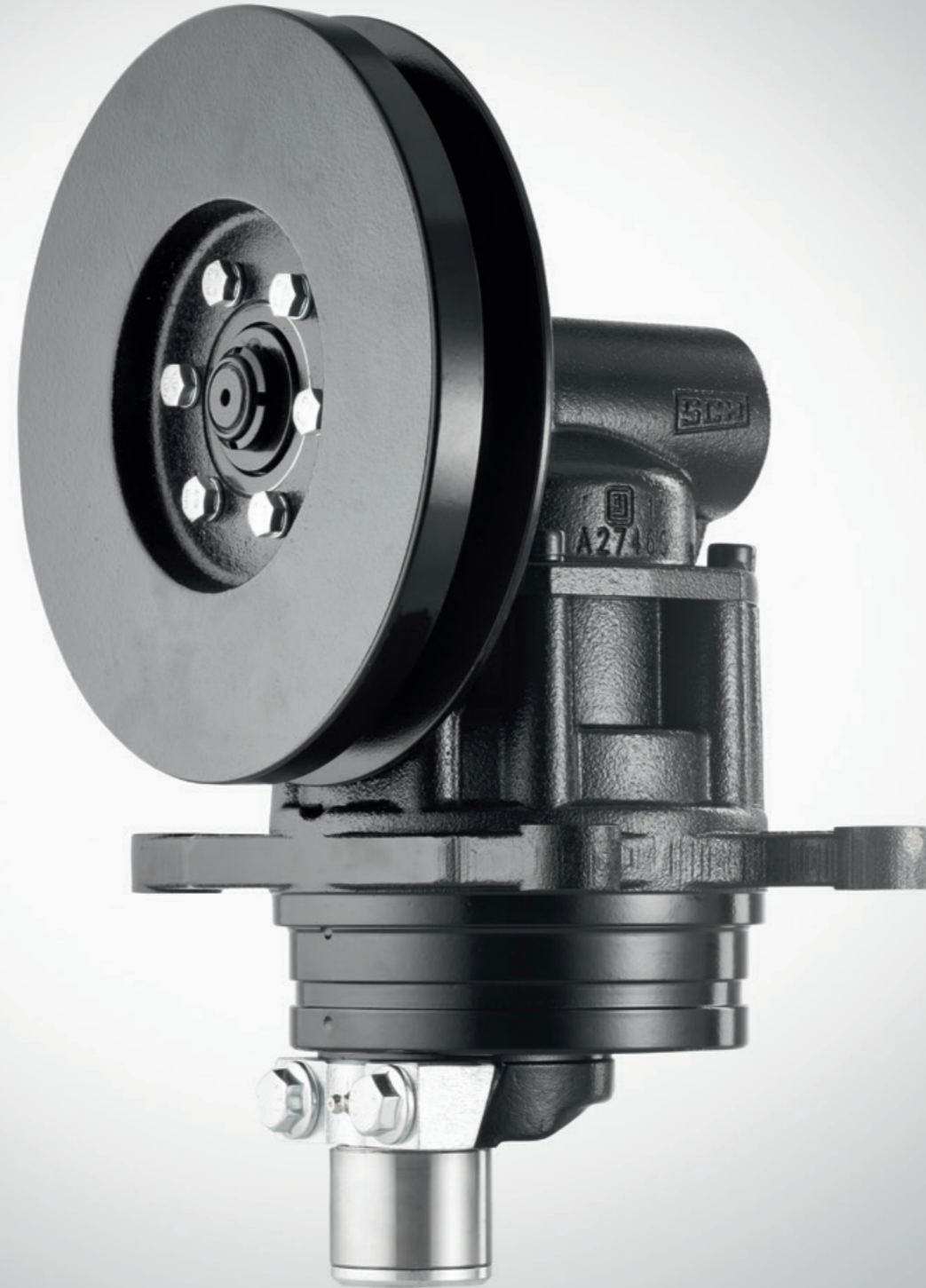


## Module series

### Pro-Drive 85MV (RS)

#### Pulley drive system

This knife drive transmits the power to the cutting system via a vertical pulley which guides the belt without redirecting the power flow. Choice of factory-fitted pulleys. This versatile drive is used in a variety of header types.



## Pro-Drive 85MV (RS)

### Pulley drive system

### Technical data

Version	Vertikal
Type of transmission	Mechanical, belt-driven
Knife stroke	85 mm; 100 % linear
Gear ratio	$i = 1,111$
Head bearing type	27 mm Prisma connection
Lubricant	Lubricating grease (KP2, DIN 51502)
Pulley diameter	180 mm – 240 mm (factory-supplied by order)
Belt tread	SPC (DIN 7753)
Weight *1	approx. 35,2 kg

\*1 Pro-Drive 85MVv GKF RS11